

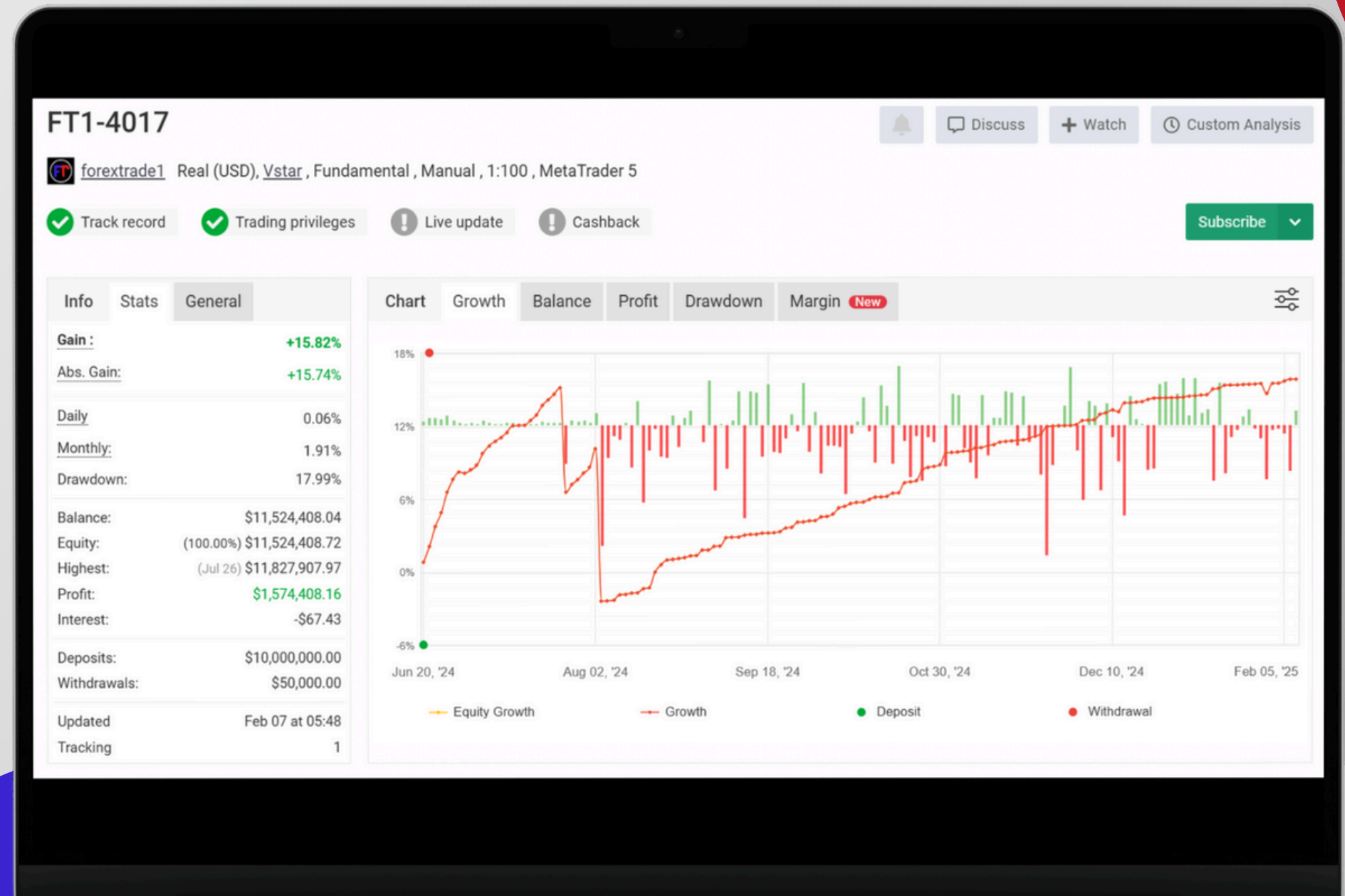
PRICE ACTION AI TRADING

- **Price Action** refers to analyzing historical price movements without relying on traditional indicators like moving averages or oscillators. Instead, it focuses on understanding the market structure through price patterns, support/resistance levels, and other price behaviors.
- **Order Blocks** are areas where significant institutional buying or selling has occurred. These are often seen as strong support or resistance zones because large institutions typically make their trades in these areas.
- **Volume Imbalance** refers to situations where there is a **discrepancy between buying and selling volume**, often signifying an impending price move. When the buying volume outweighs selling volume (or vice versa), it suggests a high probability of price movement in the direction of the imbalance.

AI-PRICE-ACTION01

\$10 MILLION LIVE MT5 INVESTOR ACCOUNT

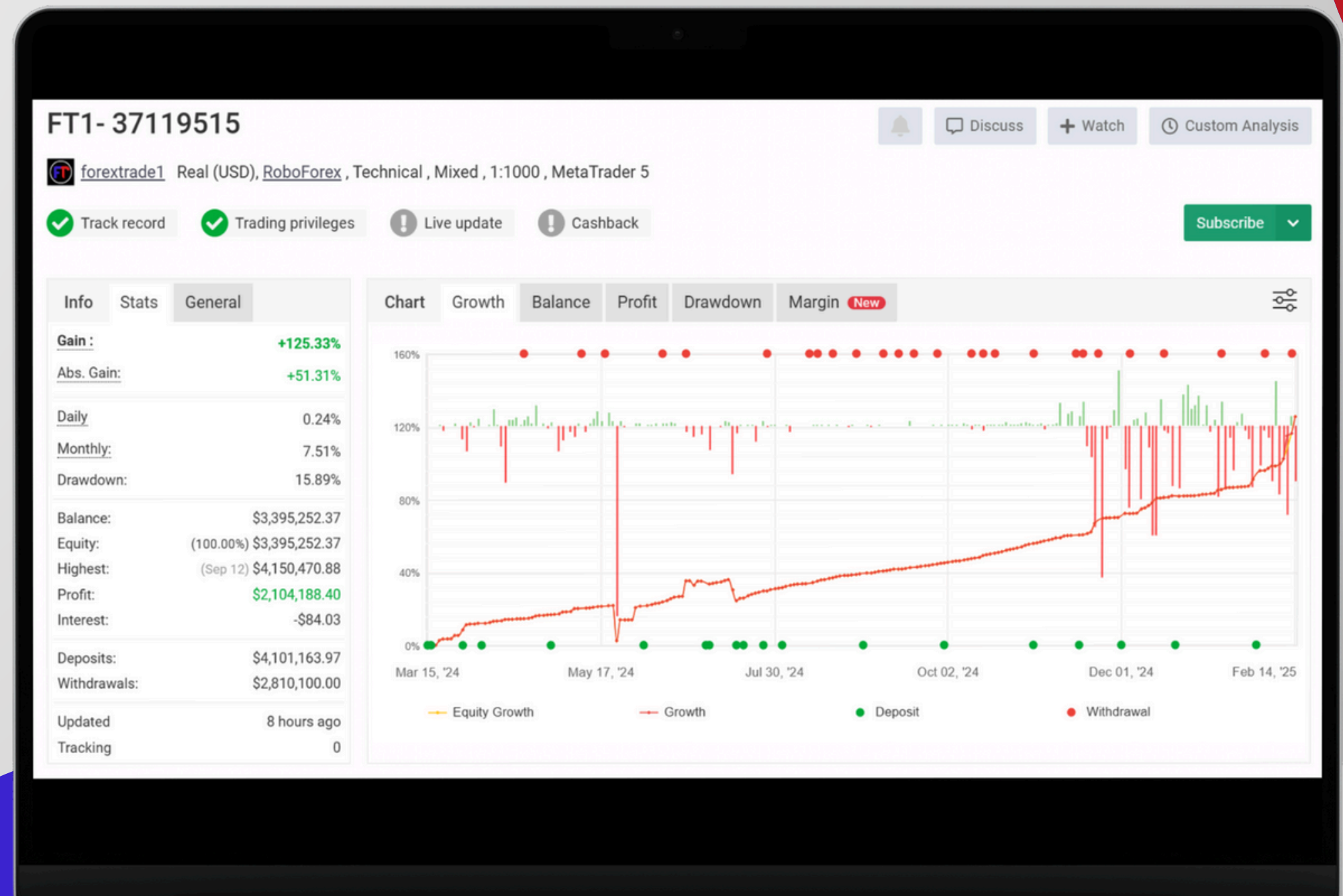
- »Login: **4017 (MT5)**
- »Password: **@Forextrade1**
- »Server: **Vstar-Server**
- »Trading start date: **20-06-2024**
- »Profit till date: **17,22,152 USD**
- »Total ROI: **17.22%**
- »Risk factor : **Moderate**



AI-PRICE-ACTION02

\$3M LIVE MT5 INVESTOR ACCOUNT

- »Login: **37119515 (MT5)**
- »Password: **@Forextrade1**
- »Server: **RoboForex-Pro**
- »Trading start date: **19-03-2024**
- »Profit till date: **21,04,188 USD**
- »Total ROI: **70.13%**
- »Risk factor : **Moderate**



Average daily Traded lots
73210 lots / 239 days
= 306.31 lots

As an IB partner, you can earn substantial commissions based on the lot size traded.
Here's the breakdown:

» IB COMMISION EARNING

1 lot = \$5 to \$10 Earning
(It may vary broker to broker)
For informative purpose \$10 For 1 lot taken.

306.31 x \$10 = \$3063 (Earning/day).

